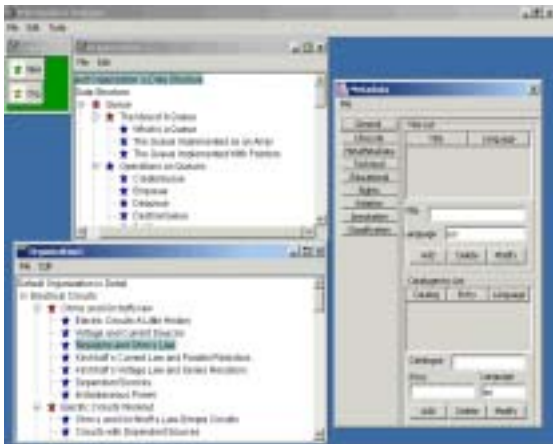


LearnITy™ Designer

The Designer is a GUI based tool for creating standard conformant learning objects including quizzes. It generates SCORM conformant content packages.

Features

- ❖ **Platform independence** – Developed using Java and hence works on all platforms (Windows, Linux, Solaris, etc.)
- ❖ **Standard compliant** – The tool is compliant with IMS and SCORM 1.2 standards and generates manifests and content packages following the standards.
- ❖ **Meta Data Support** – The tool permits entry for all the 9 categories of LOM compliant metadata and saving of the metadata inline in the manifest file or in separate files.
- ❖ **Off-line Authoring** – The tool is a standalone product that does not require it to be connected to any LCMS/LMS while you work. Since the outputs produced by the tool are standard compliant, the content package generated from the tool may be uploaded to any standard compliant LCMS/LMS.



- ❖ **Drag and Drop Course Creation** – The tool supports creation of manifests using drag and drop methods. Create the course tree structure by dragging icons from the tool palette and

dropping them on the canvas. Drag files (resources) from the file explorer and drop them on nodes in the tree for associating resources with the organisation items.

- ❖ **Virtual Courses** – Quickly create WWW-based virtual courses by associating URLs with topics and sub-topics.
- ❖ **Built-in Quiz Builder** – Course authors do not need to know HTML to create quizzes and self-tests. The GUI based quiz builder supports all the standard question types including Multiple Choice, Multiple Response, Fill in the blanks, True/False, Multiple Choice with images, etc.



- ❖ **Merged Package Creator** – Using this facility two or more SCORM packages may be merged to form a new SCORM package.
- ❖ **DHTML Package Creator** – Using this facility any SCORM package may be converted to a DHTML package enabling the user to view the contents without an LMS.
- ❖ **HTML Quality Checker** – Using this facility common errors in the syntax of HTML pages may be detected and auto corrected.
- ❖ **Built-in HTML Editor** – The tool comes with a feature rich HTML editor that supports WHISYG creation of content.

- ❖ **Built-in Graphics Tool** – The tool comes with a feature rich paint tool that may be used to create rich graphics and save them in a number of formats.
- ❖ **Prerequisite definitions** - This facility permits the definition of prerequisite relation between various elements within a course structure so that a LMS may control the navigation of a student through a course.
- ❖ **Preview facility** – A single user LCMS is built into the tool so that the preview facility can actually simulate the runtime behaviour of the course under development.
- ❖ **Internationalisation support** – The tool provides adequate support for international users through the facilities of Java language as well as the CSS generation mentioned above.

System Requirements

- ❖ Any Operating System with support for JDK 1.5 (Any flavour of Windows, Linux, Solaris, etc.)
- ❖ 128 MB of RAM (256 MB Recommended)
- ❖ 25 MB Hard Disk for the tool; additional disk space requirement will depend on the amount of courseware to be developed

Licensing

The LearnITy™ Designer is sold as a component of the LearnITy LMS that comes in various packages (Lite, Workgroup, Enterprise, etc.) Bulk licensing is also available for clients who wish to purchase multiple individual copies.

Other Products in the LearnITy™ Suite

- ❖ LearnITy™ Virtual Classroom
- ❖ LearnITy™ Assessor
- ❖ LearnITy™ Course Management System
- ❖ LearnITy™ Digital Knowledge Library
- ❖ LearnITy™ Training Management System



Aunwesh A Knowledge Technologies Pvt. Ltd.
Webel Bhavan
Block EP & GP, Sector V Bidhannagar,
Kolkata 700 091, INDIA.
Email: eng@aunwesh.com

